

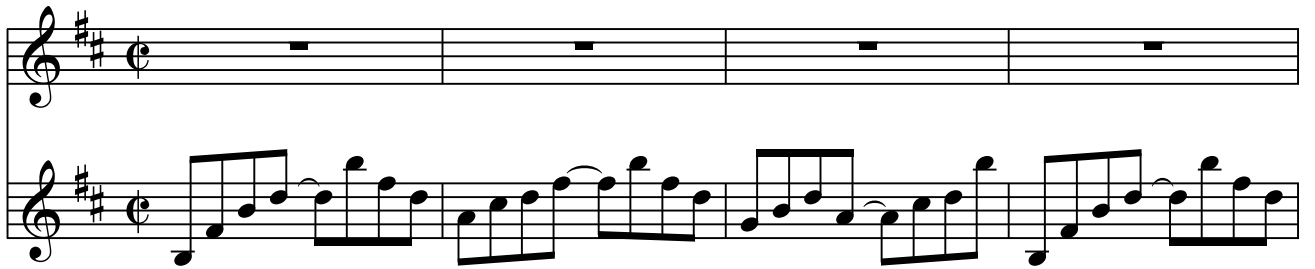
# Show me a way

$\text{♩} = 60$

Miguel Robaina

**Depressing**

Voice



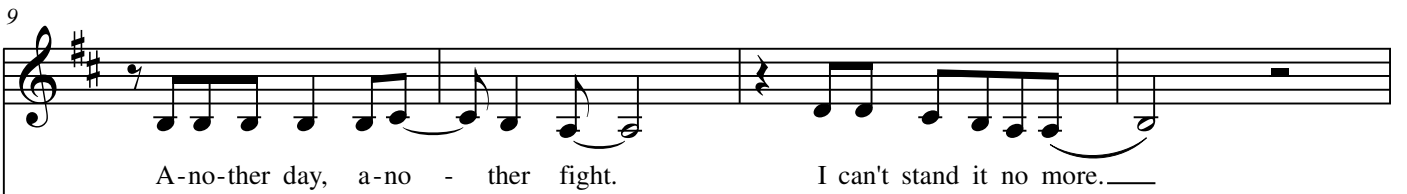
Piano

*con Ped.*

5



9



A-no-ther day, a-no - ther fight. I can't stand it no more.\_\_\_\_

9



13

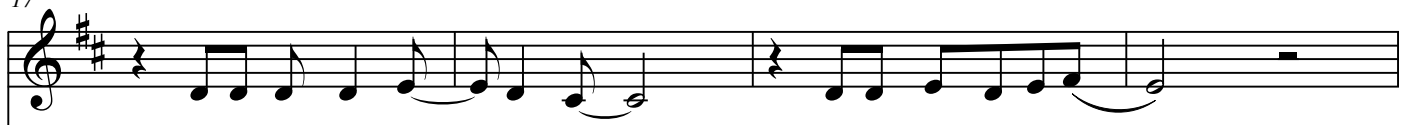


What is wrong and what \_\_\_\_ is right? I'm feel-ing so in-se-cure.\_\_\_\_

13



17



Can I trust what my \_\_\_eyes see?\_\_\_ Is my mind full of lies?\_\_\_

17

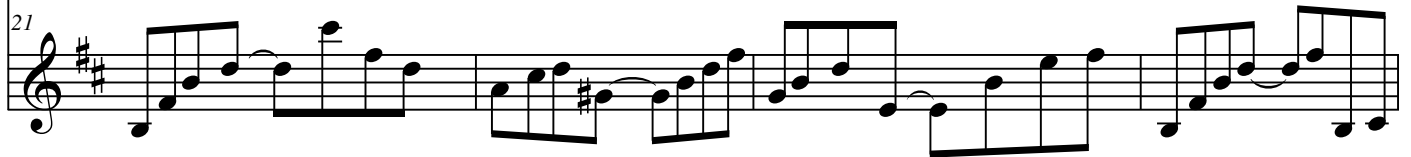


21



Is this how it's sup-posed \_\_\_ to be?\_\_\_ I need to break off these ties. \_\_\_

21



25



How can I change \_\_\_ these re - flec-tions that are haunt - ing me?\_\_\_

25



29



How do I \_\_\_ know who to \_\_\_ be?

29



*SOLO ad lib.*

33



37



Musical staff for measures 37-40, featuring a treble clef, a key signature of two sharps (F# and C#), and a 4/4 time signature. The melody consists of eighth and quarter notes.

41



Musical staff for measures 41-42, featuring a treble clef, a key signature of two sharps (F# and C#), and a 4/4 time signature. The melody consists of quarter and eighth notes.

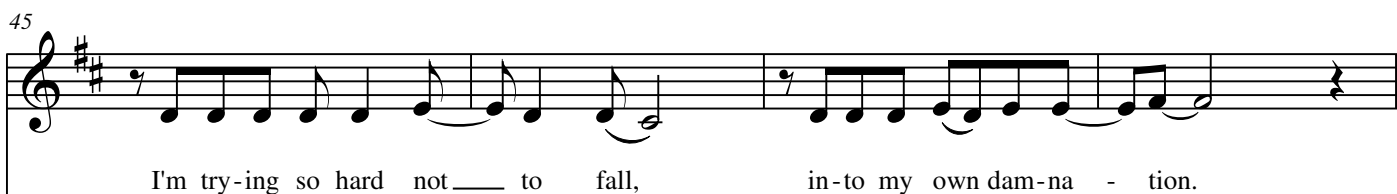
Mir-ror, mir-ror on \_\_\_\_\_ the wall. \_\_\_\_\_ Not a sight of sal-va - tion.

41



Musical staff for measures 41-42, featuring a treble clef, a key signature of two sharps (F# and C#), and a 4/4 time signature. The melody consists of eighth and quarter notes.


45



Musical staff for measures 45-46, featuring a treble clef, a key signature of two sharps (F# and C#), and a 4/4 time signature. The melody consists of quarter and eighth notes.

I'm try-ing so hard not \_\_\_\_\_ to fall, \_\_\_\_\_ in-to my own dam-na - tion.

45



Musical staff for measures 45-48, featuring a treble clef, a key signature of two sharps (F# and C#), and a 4/4 time signature. The melody consists of eighth and quarter notes.

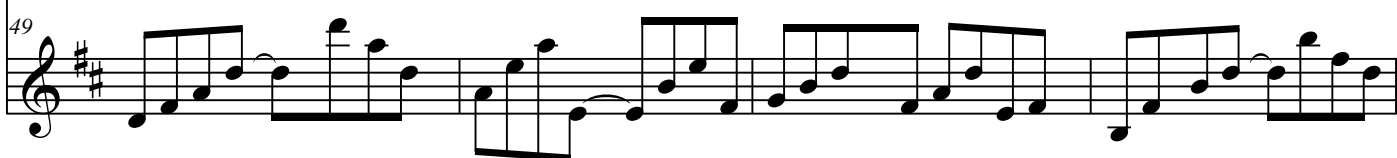
49



Musical staff for measures 49-52, featuring a treble clef, a key signature of two sharps (F# and C#), and a 4/4 time signature. The melody consists of quarter and eighth notes.

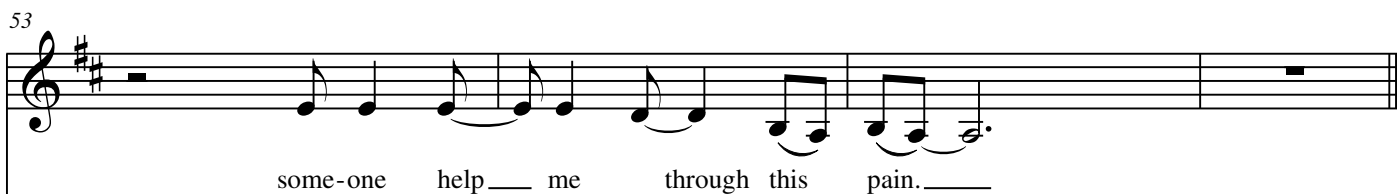
How can I face \_\_\_\_\_ these con - fu - sing words I hear \_\_\_\_\_ a-gain?

49



Musical staff for measures 49-52, featuring a treble clef, a key signature of two sharps (F# and C#), and a 4/4 time signature. The melody consists of eighth and quarter notes.


53



Musical staff for measures 53-56, featuring a treble clef, a key signature of two sharps (F# and C#), and a 4/4 time signature. The melody consists of quarter and eighth notes.

some-one help \_\_\_\_\_ me through this pain. \_\_\_\_\_

53



Musical staff for measures 53-56, featuring a treble clef, a key signature of two sharps (F# and C#), and a 4/4 time signature. The melody consists of eighth and quarter notes, ending with a double bar line and repeat sign.

57

Show me — a way —                      That's how — I pray. —

57

61

Am I — o - key? —                      Tell me — to - day. —

61

65

Can some-one break the chain —                      that's dri-ving me in - sane, —

65

69

or am i cry-ing out —                      in — — — — — vain?

69

*SOLO ad lib.*

73

77

81

85

89

Show me — a way — That's how — I pray. —

89

93

Am I — o - key? — Tell me — to - day. —

93

97

Show me a way — That's how — I pray. —

97

101



Am I o - key? — Tell me — to - day. — Can some - one break the chain



106



— that's dri - ving me in - sane, — or am i cry - ing out



110



— in ——— vain? Show me — a way — That's how — I pray.



115



— Am I — o - key? — Tell me — to - day

